

# INTRODUCTION

Thank you for purchasing HYUNDAI GENUINE Forklift.

This manual describes the procedures for operation, handling, maintenance, checking and adjustment.

It will help the operator realize peak performance through effective, economical and safe truck operation.

The contents in this manual must be understood and utilized before the equipment use for safe operation and continuous maintenance of the outstanding performance.

## **Routine Servicing and Maintenance**

Regular maintenance and care of your lift truck is not only important for economy and utilization reasons; it is essential for your safety. Defective equipment may cause potential risk to not only the operator, but also to other workers. Genuine parts of HYUNDAI must be used at all times, and maintenance plan shall be practiced to maintain the good equipment condition.

## **Operator Daily Inspection**

A lift truck should always be examined by the operator, before driving, to be sure it is safe to operate. The operator shall utilize the 『**OPERATOR DAILY CHECK LIST**』 .

## **Planned Maintenance**

In this manual, periodic planned maintenance program that covers inspections, operational checks, cleaning, lubrication, and minor adjustments are outlined, and for additional inquiries, please refer to your HYUNDAI dealer.

# EQUIPMENT GUARANTEE

HYUNDAI GENUINE is producing various construction heavy equipment to be developed as a global construction equipment maker, and best work efficiency is guaranteed through perfect work capacity and outstanding economic feasibility. Especially, HYUNDAI is continuing the efforts on R&D based on ergonomic research to be suitable for the body type of Korean workers and for various working environments.

Periodic inspection service is performed for convenience of the user. Please take into consideration that during the initial use of the equipment and after reaching 100 hours and 500 hours of equipment use, please contact HYUNDAI for a visit and free inspection service. In addition, please refer to the policy on the equipment performance and quality assurance as follows to have no issue in use.

## 1. Warranty Coverage

The forklift produced and distributed by HYUNDAI is provided with free replacement of parts or repair and maintenance work when acknowledged with the fault in material or manufacture during normal use within the warranty period in the standard of the item that is arrived first among 12 months from the date of release or 2000 hours on the hour meter.

## 2. Matters excluded from warranty (Following matters are excluded from the warranty even during the warranty period)

- 1) Matters judged to be the caused from not following the handling, operating, periodic check and storage method provided in the **「OPERATOR MANUAL」** .
- 2) Defects considered to be occurred from failure due to negligence of the user, delay in maintenance and accidents (including natural disasters)
- 3) Defects judged to be occurred from all parts used in the equipment not being using the genuine parts acknowledged by the company
- 4) Other periodic check details requested by the company for performance by the customer such as ordinary equipment maintenance - fuel system cleaning, brake check and adjustments, etc.
- 5) Consumables from normal use, in other words, periodic replacement parts for the equipment such as the filters, bulbs, fuse and oil, etc.
- 6) Abrasion of abrasive parts
- 7) Remodeling and changing the equipment without the approval by the company

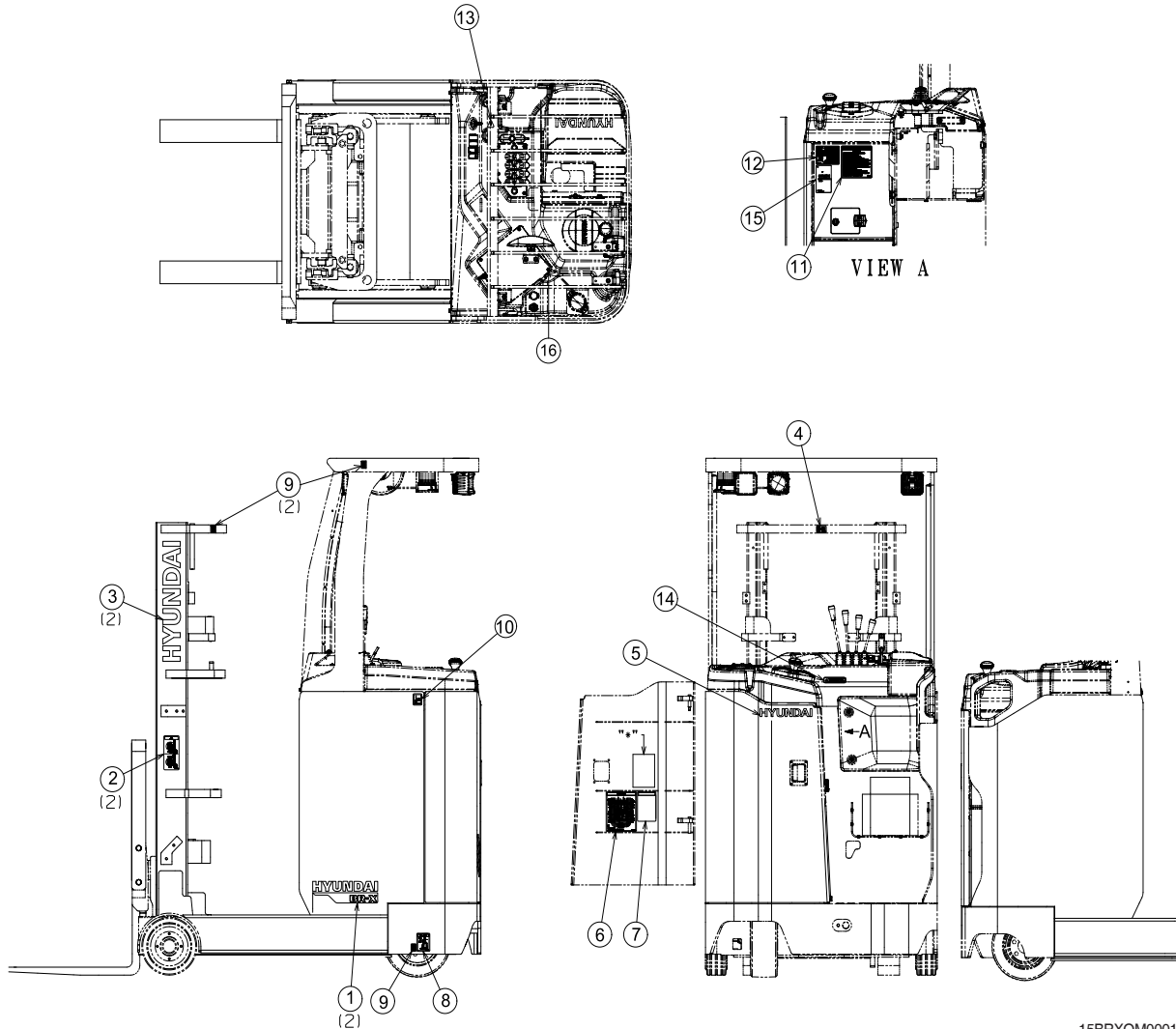
HYUNDAI GENUINE is continuing the research and development for more outstanding performance and quality improvement. Therefore, the contents in this operator's manual may be changed at any time without prior notice.

## SAFETY LABELS

### 1. LOCATION

Label must be maintained of the clean state at all times. If they are lost or damaged, attach them again.

#### 1) 15/18/20/25 BR-X



15BRXOM0001

- |                           |                            |                            |
|---------------------------|----------------------------|----------------------------|
| 1 Model name              | 7 Battery handling caution | 13 Horn                    |
| 2 Mast warning            | 8 Hanger                   | 14 Brake                   |
| 3 HYUNDAI logo            | 9 Hook                     | 15 Call Center             |
| 4 Hand caution            | 10 Temperature             | 16 Hydraulic oil injection |
| 5 HYUNDAI logo            | 11 Safety warning          |                            |
| 6 Maintenance Instruction | 12 Nameplate               |                            |

## 2. DESCRIPTION

Special warning label attached to the lift truck must be familiarized with all other warning labels. Reattach the label when it is damaged.

### 1) MAST WARNING (item 2)

This warning label is positioned on the both side of the mast.

- ⚠ **Never stand or work under the raised forks at any circumstances even when the hydraulic safety shutoff valve is in the lock position.**
- ⚠ **In case of working under the forks, it is essential to support the carriage with blocks.**



15BRXOM0002

### 2) HAND CAUTION (item 4)

This warning label is positioned on the upper side of the mast.

- ⚠ **It warns of the danger of injury from movement between rails, chains, sheaves, fork carriage, and other parts of the mast. Do not climb on or reach into the mast. Personal injury will result if any part of your body is put between moving parts of the mast.**

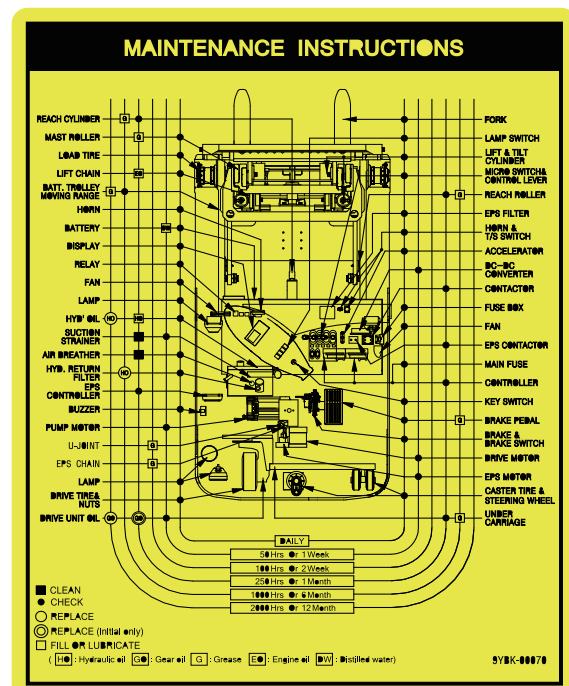


15BRXOM0003

### 3) MAINTENANCE INSTRUCTION (item 6)

This label is attached on the left side. Please refer to the checklist during the maintenance work.

- ⚠ **For the maintenance work, refer to Chapter 6 Planned Maintenance.**



15BRXOM0004-1

#### 4) BATTERY HANDLING CAUTION (item 7)

This label is attached on the left side.

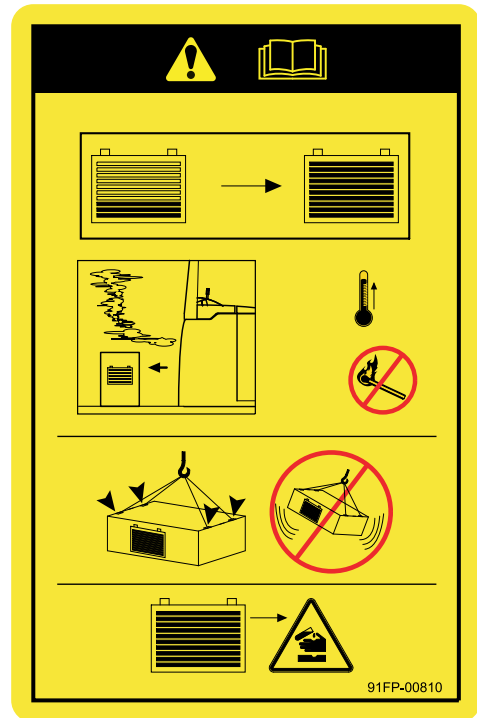
⚠ Please see Page 7-20 for the method of removing the battery.

※ Please open the battery cover while charging the battery.

Heat and explosive hydrogen gas are generated during battery charging. Never place fire near the battery.

※ When lifting the battery, hand the wire rope on 2 or 4 hooks, and take caution on not shaking the rope or applying impact.

※ Caution is required when handling the battery as there are inflammable liquid inside the battery.



15BRXOM0005

#### 5) HANGER (item 8)

This warning label is located on the left side of the bumper on the rear side of the frame.

⚠ Please see Page 1-18 of the manual for safe hauling.



15BRXOM0006

#### 6) HOOK (item 9)

This label is attached to the point of installing the hook during the lifting process.



15BRXOM0007

## 7) TEMPERATURE (item 10)

This warning label is positioned on the side cover.

**⚠ Do not use when the temperature is -30°C or less.**



15BRXOM0008

## 8) SAFETY INSTRUCTION (item 11)



### FOR SAFETY

1. BEFORE OPERATING THE TRUCK, PLEASE CHECK BRAKES, STEERING SYSTEM, HORNS AND OTHER DEVICES FOR SAFETY AND MAKING IT EASY OPERATION.
2. ONLY TRAINED AND QUALIFIED PERSONS SHOULD OPERATE THIS TRUCK.
3. PLEASE OPERATE THE TRUCK ON SUITABLE POSITION IN OPERATOR'S PLATFORM.
4. THE OPERATOR SHOULD ALWAYS WEAR A SAFETY HELMET AND SAFETY SHOES WHILE OPERATING.
5. BEFORE THE KEY SWITCH ON, PLACE THE ALL OPERATING LEVER IN NEUTRAL POSITION.
6. TO LOAD FRIEGHT SAFELY, FASTEN FORKS SURELY AND PLACE THEM ON CENTER. DO NOT OPERATE WITH UNSTABLE AND UNFIXED FORKS.
7. OPERATE MORE CAREFULLY WITH LONG, HIGH OR WIDE LOADS AND DO NOT OVERLOAD FREIGHT. PLEASE SEE THE LOAD CHART.
8. PLEASE USE STANDARD PALLET.
9. WHEN DRIVING A SLANT, PLEASE KEEP DRIVE AFTER LIFTING A FORK AND TILTING THE MAST BACKWARD.  
DO NOT TRAVEL WHEN BIG ROAD INTERFERES WITH VISIBILITY.
10. WHEN TRAVELING WITH LOAD, TILT THE MAST BACKWARD OR VERTICAL WITH THE FORK LIFTED SLIGHTLY. DO NOT TILT THE MAST FORWARD.
11. AVOID SUDDEN START, STOP, TURN AROUND AND UNSAFE SPEED ACCELERATION. PLEASE PAY ATTENTION TO OPERATE CAREFULLY.
12. DO NOT LOAD AND UNLOAD FREIGHT WHEN TRAVELING.
13. DO NOT ALLOW ANYONE TO STAND OR PASS UNDER FORKS OR LIFTING MECHANISM.
14. PLEASE SECURE ENOUGH SPACE NOT TO GET ANY OBSACLE CAUGHT ON THE END OF FORKS WHILE LIFTING.
15. PLEASE DO NOT OPERATE OVER RATED LOAD.
16. PLEASE LOWER FORKS TO GROUND,CHECK THE NEUTRAL POSITION OF THE DRIVE LEVER, AND REMOVE THE KEY OR CONNECTOR PLUG WHEN LEAVING THE TRUCK.
17. ASK FOR QUALIFIED PERSONS IF ANY TROUBLE HAPPENS IN THE TRUCK.

91FH-01661

15BRXOM0009-1

**10) HYDRAULIC OIL INJECTION UNIT (item 16)**

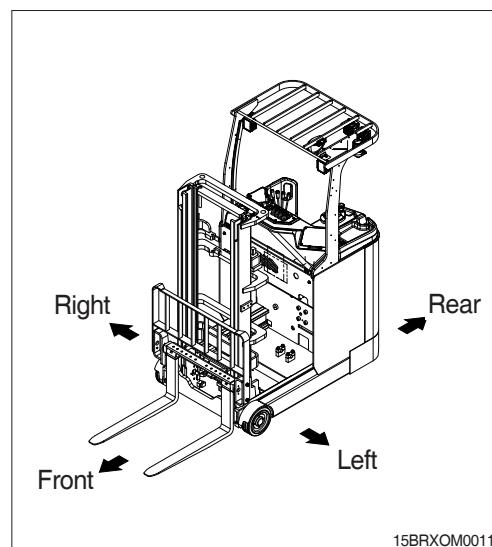
This label is located on the hydraulic oil injection unit of the dashboard.



15BRXOM0013-1

## 1. DIRECTION

The directions of this truck indicate forward, backward, right and left when truck is in the traveling direction.

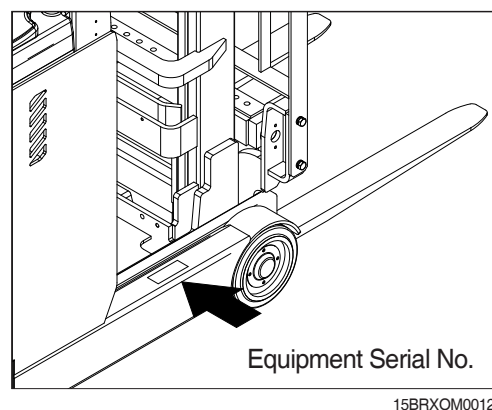


## 2. SERIAL NUMBER

Inform following when you order parts or the truck is out of order.

### 1) TRUCK SERIAL NUMBER

It is imprinted on the upper side of the leg on the right side of the frame.



## 3. SYMBOLS

- ▲ As the contents important for safety, symbols indicate the matters that can have critical impact.
- ▲ It indicates matters which can cause the great loss on the truck or the surroundings.
- ※ It indicates the matters that can having impact to the performance or function of the parts, or useful information for the operator.



## 4. HOW TO USE THIS MANUAL

This manual is a digest of essential information about the safe operation, the features, functions and maintenance of the equipment, and this manual is organized into eight parts.

「**CHAPTER 1 SAFETY HINTS**」 describes the general matters required for safe operation of the lift truck.

「**CHAPTER 2 OPERATING HAZARDS**」 warns of conditions that could cause damage to the truck or injury to the operator or other personnel.

「**CHAPTER 3 KNOW YOUR TRUCK**」 describes the major operating components, systems, controls, and other features of your truck and tells how they function.

「**CHAPTER 4 OPERATOR MAINTENANCE AND CARE**」 describes the daily safety and functional checks that the operator must perform.

「**CHAPTER 5 STARTING AND OPERATING PROCEDURES**」 describes the method of safe and efficient use of the equipment operated by the operator.

「**CHAPTER 6 PLANNED MAINTENANCE**」 describes the overall matters on checking and maintenance of the equipment.

「**CHAPTER 7 SPECIFICATIONS**」 provide information and data on the main parts of the equipment.

Take time to read and understand the information on general safety rules and operating hazards. Acquaint yourself with the various procedures in this manual.

Understand how all gauges, indicator lights, and controls function. Please contact your authorized HYUNDAI dealer for the answers to any questions you may have about your lift truck's features, operation, or manuals.

Operate your lift truck safely; careful driving is your responsibility. Drive defensively and think about the safety of people who are working nearby. Know your truck's capabilities and limitations. To prevent the harm to the operator and other workers, all instructions included in the manual must be followed, along with those described in Main Matters and Risks, etc.

## 5. SAFETY LABEL AND SYMBOLS

Please read this manual carefully before operating the truck.

The manual must be read consistently until proper operation is familiarized.

Safety label and signs are indicated in the manual and truck to provide necessary instructions and signs on possibility of accidents and risks to the operator, and preventive measures are also indicated. These instructions, labels and symbols must be familiarized and understood. In the case of not following these signs, it will result in not only damaging the truck, but also result in serious injury or even death of the operator and other workers. Please replace any damaged sign stickers.

**▲ As the contents important for safety, symbols indicate the matters that can have critical impact.**

**▲ It indicates matters which can cause the great loss on the truck or the surroundings.**

**※ It indicates the matters that can having impact to the parts or functions, or useful information for the operator.**